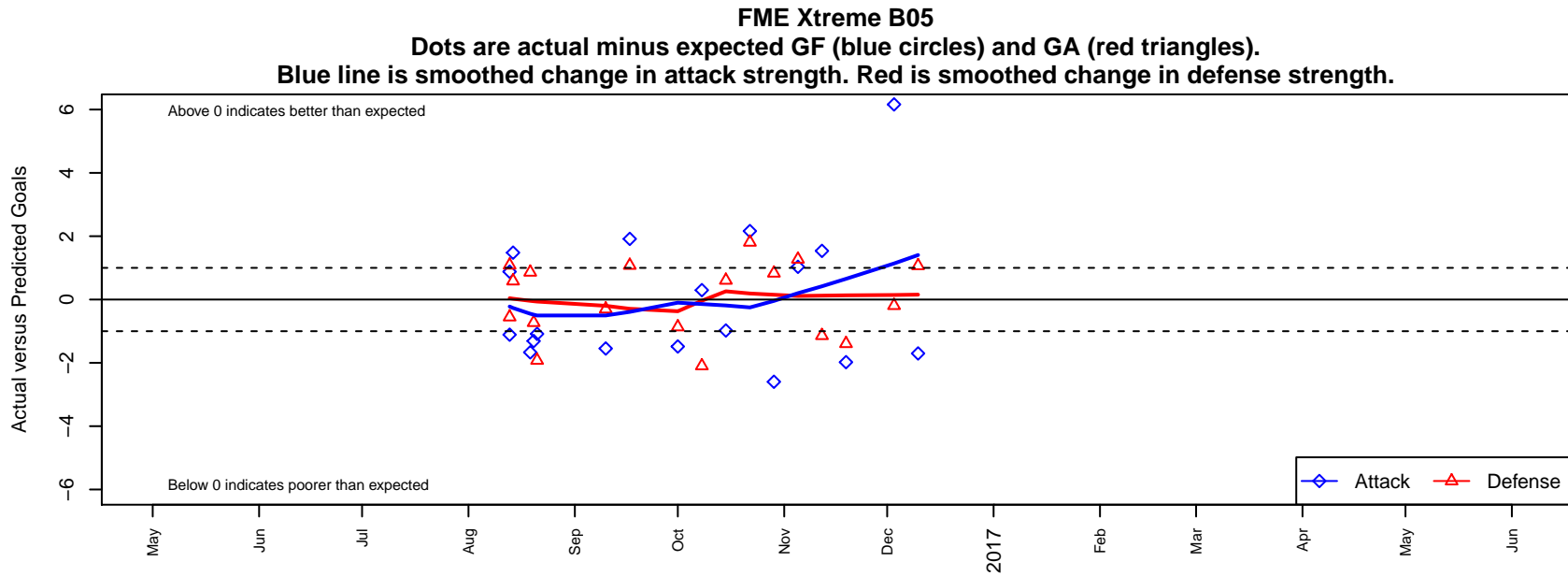


# FME Xtreme B05

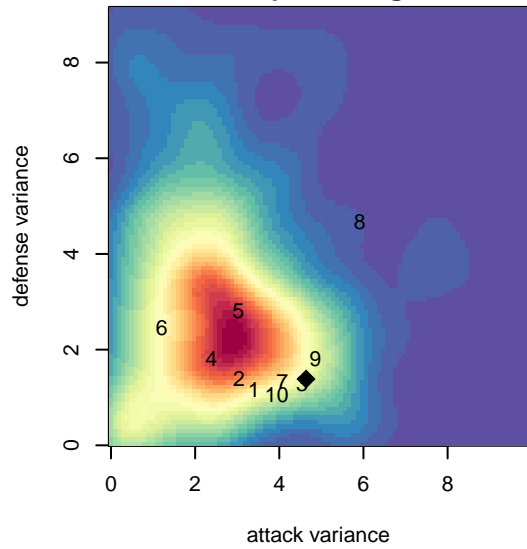
Fife Milton Edgewood SC  
Milton, WA  
B05 total strength=505  
attack=0.47 defense=0.28  
fall league = NPSL Div 3 (05) U12

alt names used:  
FME Xtreme B05  
FME Xtreme

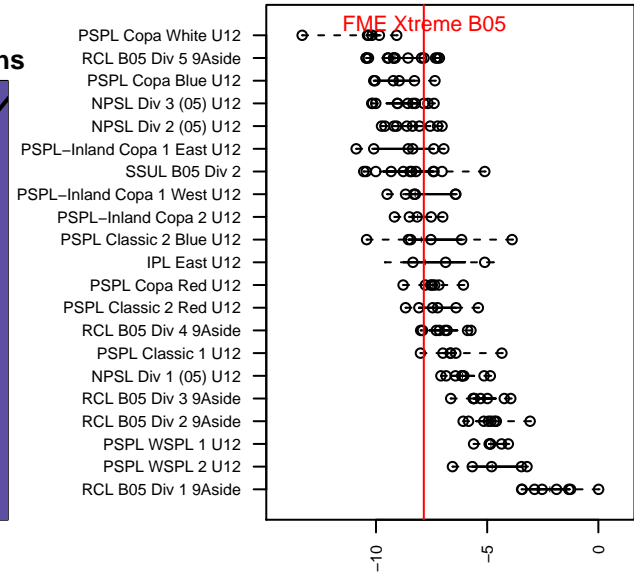
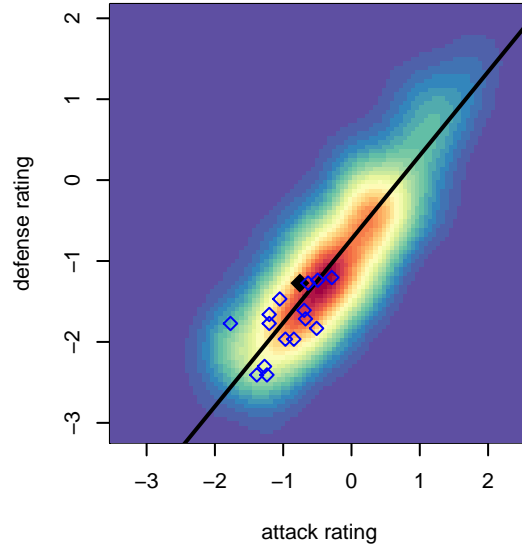
Venues played:  
2016 Blast Off B2005 B  
2016 Xtreme Cup BU12 Bronze  
2016 NPSL Division 3 (05) U12



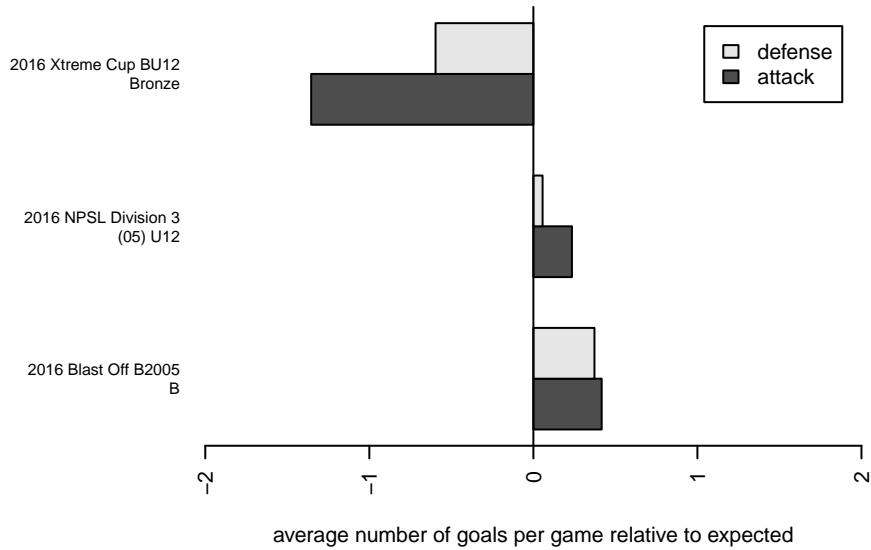
**attack and defense variance (black dot)  
relative to other teams  
and top 10 in region**



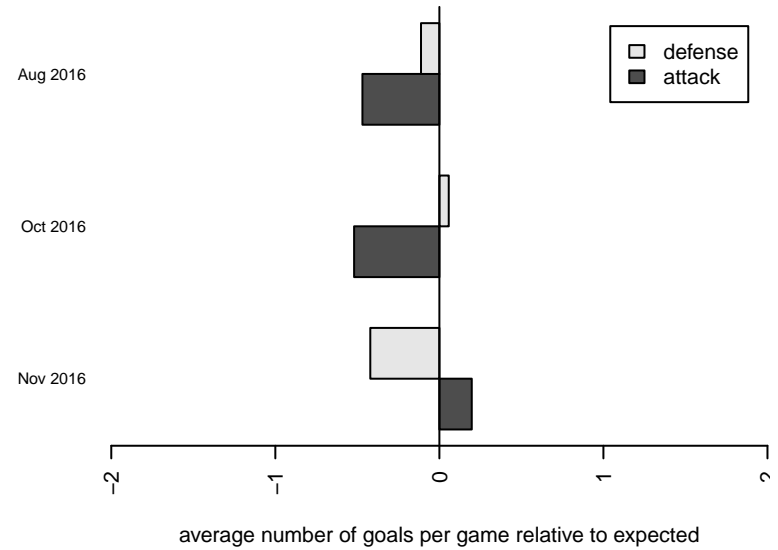
**attack and defense rating  
relative to others at age  
and all opponents in last 13 months**



**Performance relative to 13 month average**



**Performance relative to 13 month average**



| <b>date</b> | <b>home</b>                |   | <b>away</b>                 |   | <b>venue</b>                  | <b>pred.home</b> | <b>pred.away</b> |
|-------------|----------------------------|---|-----------------------------|---|-------------------------------|------------------|------------------|
| 2016-12-10  | FME Xtreme B05             | 3 | NWSC Deception FC Black B05 | 0 | 2016 NPSL Division 3 (05) U12 | 4.70             | 1.07             |
| 2016-12-03  | IFC Red B05                | 2 | FME Xtreme B05              | 9 | 2016 NPSL Division 3 (05) U12 | 1.81             | 2.84             |
| 2016-11-19  | FME Xtreme B05             | 1 | Mukilteo Rush Nero B05      | 2 | 2016 NPSL Division 3 (05) U12 | 2.98             | 0.61             |
| 2016-11-12  | Bellevue United Select B05 | 3 | FME Xtreme B05              | 4 | 2016 NPSL Division 3 (05) U12 | 1.86             | 2.46             |
| 2016-11-05  | NSC Magic Black B05        | 0 | FME Xtreme B05              | 3 | 2016 NPSL Division 3 (05) U12 | 1.27             | 1.97             |
| 2016-10-29  | FME Xtreme B05             | 0 | BIFC White B05              | 0 | 2016 NPSL Division 3 (05) U12 | 2.60             | 0.83             |
| 2016-10-22  | FME Xtreme B05             | 5 | IFC Red B05                 | 0 | 2016 NPSL Division 3 (05) U12 | 2.84             | 1.81             |
| 2016-10-15  | Mukilteo Rush Nero B05     | 0 | FME Xtreme B05              | 2 | 2016 NPSL Division 3 (05) U12 | 0.61             | 2.98             |
| 2016-10-08  | FME Xtreme B05             | 2 | Mukilteo Rush B05           | 4 | 2016 NPSL Division 3 (05) U12 | 1.70             | 1.90             |
| 2016-10-01  | FME Xtreme B05             | 0 | Southlake Select White B05  | 3 | 2016 NPSL Division 3 (05) U12 | 1.48             | 2.13             |
| 2016-09-17  | Newport FC B B05           | 0 | FME Xtreme B05              | 7 | 2016 NPSL Division 3 (05) U12 | 1.08             | 5.09             |
| 2016-09-10  | NW United White B05        | 2 | FME Xtreme B05              | 1 | 2016 NPSL Division 3 (05) U12 | 1.70             | 2.55             |
| 2016-08-21  | FME Xtreme B05             | 4 | Newport FC B B05            | 3 | 2016 Xtreme Cup BU12 Bronze   | 5.09             | 1.08             |
| 2016-08-20  | FME Xtreme B05             | 1 | ISC Gunners Select B05      | 2 | 2016 Xtreme Cup BU12 Bronze   | 2.31             | 1.27             |
| 2016-08-19  | Silver FC B05              | 0 | FME Xtreme B05              | 3 | 2016 Xtreme Cup BU12 Bronze   | 0.86             | 4.67             |
| 2016-08-14  | Norpoint Renegades B05     | 2 | FME Xtreme B05              | 3 | 2016 Blast Off B2005 B        | 2.58             | 1.52             |
| 2016-08-13  | FME Xtreme B05             | 2 | Kent City Black B05         | 1 | 2016 Blast Off B2005 B        | 3.11             | 2.09             |
| 2016-08-13  | FWFC White B05             | 2 | FME Xtreme B05              | 4 | 2016 Blast Off B2005 B        | 1.45             | 3.12             |